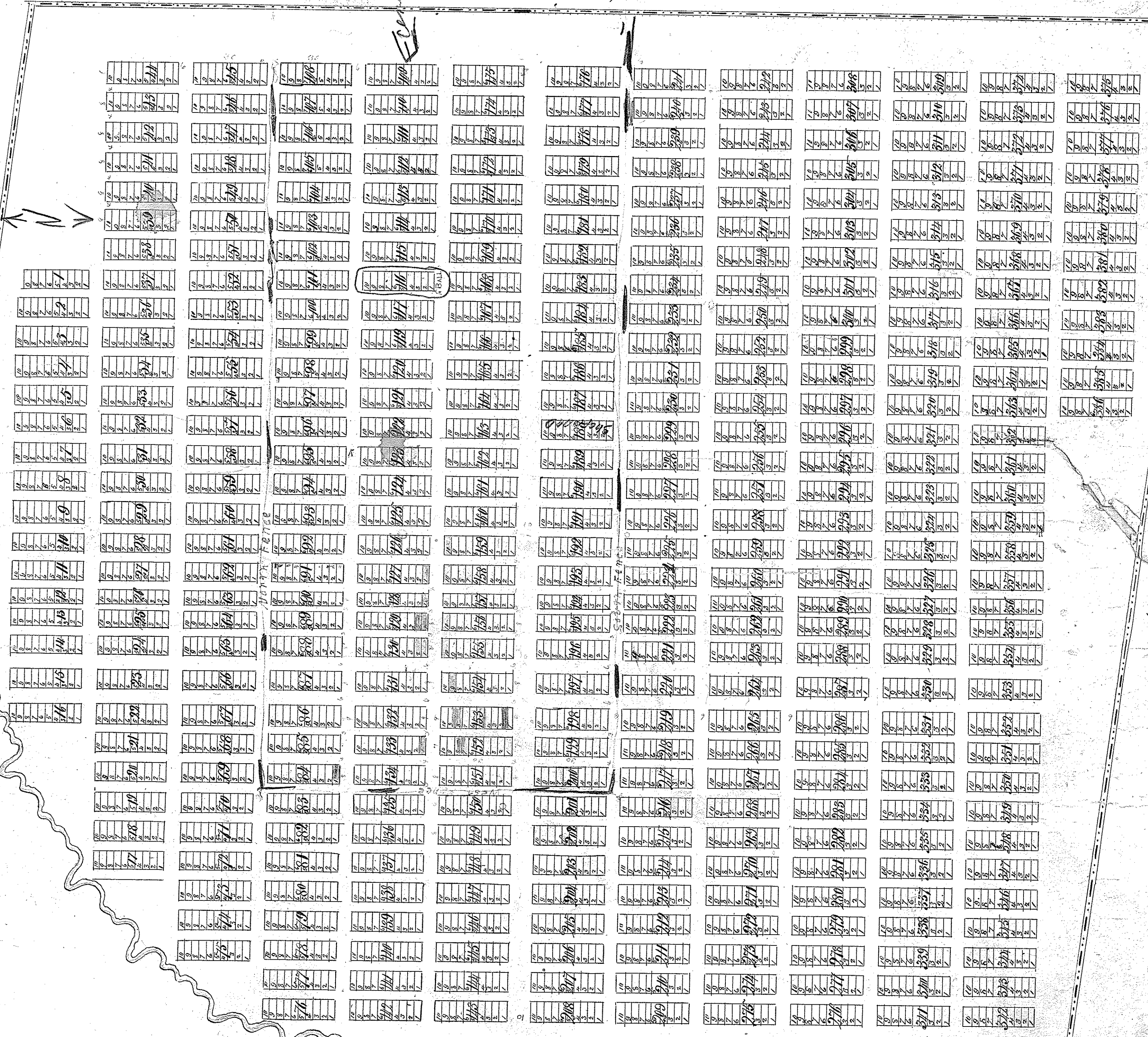


MAP OF SHEPHERD CEMETARY

I hereby certify that on the 6th day of April 1884 I surveyed for the Shiloh Association a burial ground situated on section 25 Township 22 North range 20 East of the principal meridian in Leon Co. Mo., to be known & styled by the name of **Shiloh Cemetery** of which the accompanying is a correct plan delineated as follows, first by a boundary enclosing five acres new part the blocks are 8 by 80 ft and alleys 4 ft wide, and **H. & W. 6 ft** - the old part (now occupied & designated by blue shading) there is one row of blocks 9 by 30 ft, one row of five alleys, three 31 ft wide & two of 6 ft, there is an avenue near the corner 11 ft wide bearing **S. 82 E.** and one on each side of 15 ft in width.

Done by **Jno. Harrel**

N. 88 E. 6 26.7 fms.



E. C. Taylor

S. 7 1/2 E. 30 fms.

N. 7 1/2 W. 30 fms.

Scale 30 Ft. to 1 inch.

April 19 1884 M 3885